



Crowmarsh Gifford C.E. Primary School

"Let your light shine..." ~Matthew 5:16~ Faith ~ Service ~ Integrity ~ Responsibility ~ Truth ~ Excellence

Week 1

Term 6

June 6th, 2019

SIAMS Inspection

Please find the final report of our SIAMS inspection from before half term. A huge congratulations to all of the team here at Crowmarsh. We truly have a phenomenal school where every child, 'shines their light brightly.' Thank you to all of our parents who support what we do. Your children are incredible and you should be so very proud of them. They are what make our school an amazing place to be every day.

Poster Competition

A huge congratulations to both Alfie in Year 1 and Oliver in year 5 for their winning poster design entries. I will be using their ideas to create a school poster that will be displayed in school and on the website. Well done boys!

OVO Energy Women's Tour

Next Wednesday, June 12th, the OVO Energy Women's Bike Tour will be racing through Crowmarsh. We will take this opportunity to let the children watch the women fly by. The bikes are scheduled to come through around 12:15, but the timings may change on the day. If you would like to come and watch with us, you'd be more than welcome. More information on the race can be found at: <https://www.tourofbritain.co.uk/>

The Explorer Dome

Last chance to book! Don't miss out on this very rare opportunity! We have the Explorer Dome in

school for parents on Saturday June 22nd. For the first time, parents will have the chance to experience an Explorer Dome session with their children at school. Thanks to NAPE, we have secured a Saturday booking with the Explorer Dome. Please note that information has now been sent out to other local schools, so if you want to reserve a space you must act quickly. The show on Saturday is 'The Earth Show' – a completely new show to every child in school – they will not have ever done this session before. Don't miss out on this exciting opportunity! (Please also note that the subject covered would also be interesting to any older children studying for GCSE's based on the content covered). Please see flyer attached and book now to avoid disappointment.

Lunchtime Supervisors

Do you know anyone local who has an hour to spare at lunchtimes? We are seeking some extra adults to help with lunchtime supervision between 12 and 1:00. Please send anyone interested our way! Thank you!

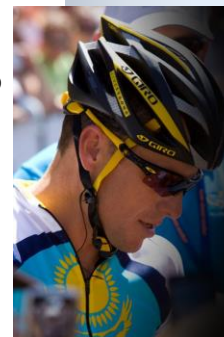
Half Term Reading

Well done to all the children who completed a book review over the half term. We had more children complete this challenge than ever before. They have all chosen lovely brand new books from Mrs Barton's library as their prizes. Keep on reading everyone!

What does it mean,
"Don't judge a book by
its cover?"

How is this relevant to
what we have been
talking about in
Collective Worship?

...



Anything is possible. You can be told that you have a 90-percent chance or a 50-percent chance or a 1-percent chance, but **you have to believe, and you have to fight.**

– Lance Armstrong

AZ QUOTES

Summer Performance Evening

A reminder that on Wednesday July 10th we will be having our final performance evening. I am challenging pupils to memorise certain poems and perform them on this evening, so if you'd like to get them involved please let us know! Let's make this the best and biggest performance evening yet!

Summer Walk

Please note that I have had to change the date of the summer walk to the Saturday after originally posted. We will meet at the parking lot near the bridge in Dorchester again and walk up the Wittenham Clumps with the opportunity to stop for ice creams and snacks at the end. Please join me on Saturday July 13th, at 10:30. Let's make this the biggest walk yet! You have plenty of time to round up friends, family and pets to join us! Collection buckets will be available on the day or you can still donate online at: www.justgiving.com/flora-barton1

Adult Krav Maga

It's not too late to join us for Krav Maga – a martial art based self-defence – on Monday evenings starting from 5 until 6:30. Each session is £10 and is in the school hall

Uniform

Please can we remind you that all children should be wearing a full school uniform. We are noticing that more and more children are coming into school with trainers and big colourful bows in their hair. All children should be wearing proper school shoes and if children are wearing headwear it should be in our school colours.

Sun Safety

As the weather becomes warmer and the sun continues to shine (we hope!) please send your

child in with a sun hat, bottle of water and sun lotion.

Flower Festival

We are continuing to produce wonderful art and supporting our church, St Mary Magdelene with an entry for their theme of Anniversaries on 8th & 9th June, this weekend. More details on attachments at the end of this newsletter.

We do need **lunch orders** to be submitted to the school office on the date specified on the order form. Jacket potatoes are very popular and when ordered on the day it is not always possible to guarantee getting one.

The green post box at the start of the pedestrian entrance to school and the green box in school reception are emptied daily. All school communication can safely and confidently be deposited that way.

School dinner menus will be emailed weekly separately out on a Wednesday. – Please ensure you order your lunch requirements, especially jacket potatoes in advance. Please see flyers and adverts for community events at the end of this document.

Choir News

- **Festival of Voices**, Friday 21st June at Dorchester Abbey. Years 3 – 6
- Singing to the '**Old People**' at Wallingford Baptist Church, Thursday 27th June.
- **Rock Steady Concert**, Monday 1st July
- **Music & Poetry** performance evening, Wednesday 10th July
- **St Mary Magdalen** Crowmarsh 11am Church service performance

PE News

Governors' Email

Parents wishing to contact the school governors may email them at 1gov5937@crowmarsh-gifford.oxon.sch.uk

PTA News

PTA AGM. Tuesday 11th June 7.30-8.30. Please come along and help us decide on how we can use the money we have raised this year. We welcome your input and opinions. The Chair, Vice chair and Secretary are all happy to continue in post for another year.

Mel Cornut will not be able to continue as treasurer due to her daughter moving onto secondary school so we do need someone with accountancy experience to take on this role. Mel has been a fantastic member of the Committee, not only as treasurer but with all her help in organising and running many of our events. Thank you Mel. We will miss you.

Ice Cream Friday - This will continue every Friday this term. Let Caroline Rowley know if you can ever help with the selling to spread the load. Ice cream and Lollies selling every Friday in KS2 playground. Cones £1 and Lollies 50p. (Under shelter of class 3 and 4 if raining).

Coming up.....

Wallingford Carnival. Saturday 15th June. Thank you to Chloe Chesterton & Helen Hendy for enabling us to enter this fun event. Please do come and help get the float looking it's best so that the children can experience an incredible day. All details of times have been sent out in a separate communication.

Film Club & Camp Out. Friday 21st June - Sat 22nd June.

After such a successful camp out last year we are holding another. We can have up to 21 pitches on the school field and may be able to accommodate campervan on the KS2 playground. If you would like to join us for an evening of games, campfire & camping please enquire at the office for a form. Cost. £5 per pitch & £2 contributions if wanting to cook your own food on our BBQ.

Film Club. Friday 21st June 3.15-5. Limited numbers this time due to space restriction. Form to be emailed shortly with details of film choice. £3 per child to include a drink & snack.

Sports Day. Friday 28th June. 8.45-3.30 PTA will be selling refreshments throughout sports day so you can fully enjoy watching the children run, jump or throw. We will need help so please let us know if you can assist in any way.

Pre-School News

Church News

Flower Festival. Please show your support and make an opportunity this weekend to go and visit the wonderful arrangements and displays on show – we have also provided one.

WBC Holiday Club is proud to present, for one week only... Circus Adventure! Mon 29 July - Fri 2 Aug 2019. 9.30am to 1pm each day. For anyone of Primary School Age (including children who will have just finished Year 6) Fun, games, craft, singing, Bible stories... The suggested contribution is £20 per child (Payable to Wallingford Baptist Church). Bring your own packed lunches. Places are limited so book soon! For further information please email

holidayclub@wallingfordbaptist.co.uk

BLAST – Building Lives Around Sound Truth. Games, Crafts, Music, Nights out, Tuck shop - £1 entry. Wallingford Baptist Church. Open to school years 6 – 7 every Friday evening during term time 7pm – 8pm.
blast@wallingfordbaptist.co.uk

Community News – We are happy to include community items when space permits, but readers should be aware that events and activities have not been researched by the school.

COMPETITION: “We love Hill End – a place of possibilities”. Tell them why you love Hill End with a picture or a photo(s) - mounted and with a descriptive caption. Details on newsletter attachments.

Wallingford Festival of Cycling is returning for the fifth year and they have just announced their action-packed weekend programme from 12 – 14 July 2019. Just let them know you're coming along by emailing hendriette.knouwds@southandvale.gov.uk. To sign up to one of the community rides <https://www.wallingfordfestivalofcycling.co.uk/take-part/fun-rides-and-sportives/>

The Oxford & Cambridge Singing School Summer Courses 2019, open to children aged 7-13 on: 25th & 26 July, 29th - 31st July 2019 (2, 3 or 5 days available), at Magdalen College, Oxford. Bursaries are available on all our courses. Booking is via our website - www.oxbridgesingingschool.com or for more information, please email Samantha Wickham on Samantha@oxbridgesingingschool.com

Summer sports course at Stadhampton School on 12, 13

and 14 August and is led by Michael Hopkins. Sessions run from 9am – 3pm. Open to boys and girls from 4 – 11 year olds. The cost is £15 per day.
m.hopkins07@hotmail.com
07846 012 858

Avanti Cycling are running mountain biking courses during the school holidays. They are a specialist training organisation which provide Bikeability training to schools in Berkshire and Oxfordshire. For more information customerservices@ridewise.org.uk